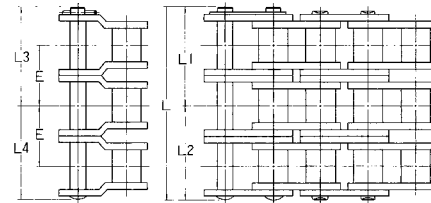
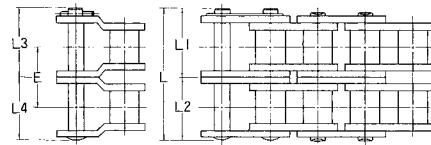
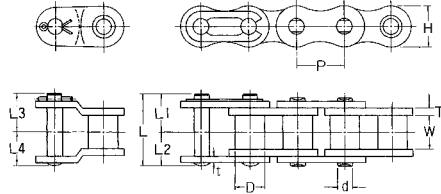
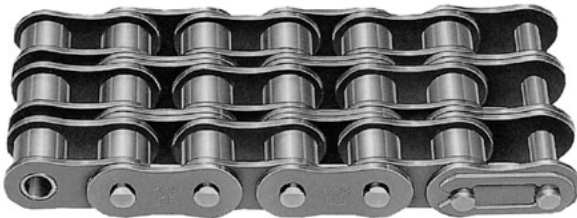


OCM BS/DIN ROLLER CHAIN

BS/DIN ROLLER CHAIN



UNIT:mm

OCM Chain No.	ISO-B No.	Pitch P	Roller Diam. D	Width between L.P.		Link Plate				Pin Diam. d	Pin					Trans Pitch E	Minimum Tensile Strength		Approx Weight kg/m
						H	T	t	L		L1	L2	L3	L4	kN		kg		
04	-	6.00	4	2.8	5	0.6	0.6	1.85	7.3	3.1	4.2	-	-	-	3.04	310	0.12		
05B	05B	8.00	5	3.2	7.1	0.75	0.75	2.3	8.7	4.8	3.9	4.8	4.1	-	4.61	470	0.18		
06B									13.4	7.2	6.2	7.6	6.6		8.92	910	0.37		
06B-2	06B	9.525	6.35	5.72	8.2	1.32	1.05	3.28	23.7	12.35	11.35	12.75	11.75	10.24	16.97	1730	0.70		
06B-3									34	17.5	16.5	17.85	16.85		24.91	2540	1.05		
08B									18.3	9.8	8.5	10.6	8.5		17.85	1820	0.71		
08B-2	08B	12.70	8.51	7.85	11.8	1.62	1.62	4.45	32.3	16.85	15.45	17.5	15.5	13.92	31.38	3200	1.30		
08B-3									46.2	23.8	22.4	24.5	22.4		45.11	4600	2.00		
10B									21.2	11.6	9.6	11.7	9.7		22.26	2270	0.95		
10B-2	10B	15.875	10.16	9.8	14.7	1.62	1.62	5.08	37.9	19.95	17.95	20	18	16.59	44.52	4540	1.80		
10B-3									54.5	28.25	26.25	28.3	26.3		66.78	6810	2.70		
12B									24.3	13.1	11.2	13.6	11.3		28.93	2950	1.30		
12B-2	12B	19.05	12.07	11.7	16.1	1.88	1.88	5.72	43.8	22.85	20.95	23.35	21.05	19.46	57.86	5900	2.50		
12B-3									63.3	32.6	30.7	33.1	30.8		86.79	8850	3.80		
16B									38.2	20.2	18	21.7	20.2		63.74	6500	2.90		
16B-2	16B	25.40	15.88	17.05	21.08	4.1	3.2	8.28	70	36	34	37.7	36.1	31.88	112.78	11500	5.60		
16B-3									101.8	51.9	49.9	53.6	52.1		170.642	17400	8.20		
20B									44.4	23.7	20.7	24.6	23		98.07	10000	3.80		
20B-2	20B	31.75	19.05	19.6	26.4	4.4	3.5	10.19	80.9	41.95	38.95	42.85	41.25	36.45	176.52	18000	7.40		
20B-3									117.3	60.2	57.1	61.05	59.45		259.88	26500	11.80		
24B									58.7	32	26.7	32.9	30.7		166.71	17000	7.10		
24B-2	24B	38.10	25.4	25.4	33.4	5.9	4.9	14.61	107.2	56.3	50.9	57.1	54.9	48.36	294.2	30000	13.90		
24B-3									155.5	80.4	75.1	81.3	79.1		446.2	45500	20.80		
28B									70.2	37.7	32.5	38.9	36.6		200.06	20400	8.60		
28B-2	28B	44.45	27.94	31	36.7	7.4	6.3	15.88	129.8	67.45	62.35	68.7	66.4	59.56	360.88	36800	16.60		
28B-3									189.4	97.3	92.1	98.5	96.2		539.37	55000	25.50		
32B									71.1	37.7	33.4	38.4	36.6		254.97	26000	9.60		
32B-2	32B	50.80	29.2	31	41.9	6.9	6.3	17.79	129.7	67	62.7	67.7	65.9	58.55	460.91	47000	18.7		
32B-3									188.2	96.25	91.95	97	95.2		686.47	70000	27.8		