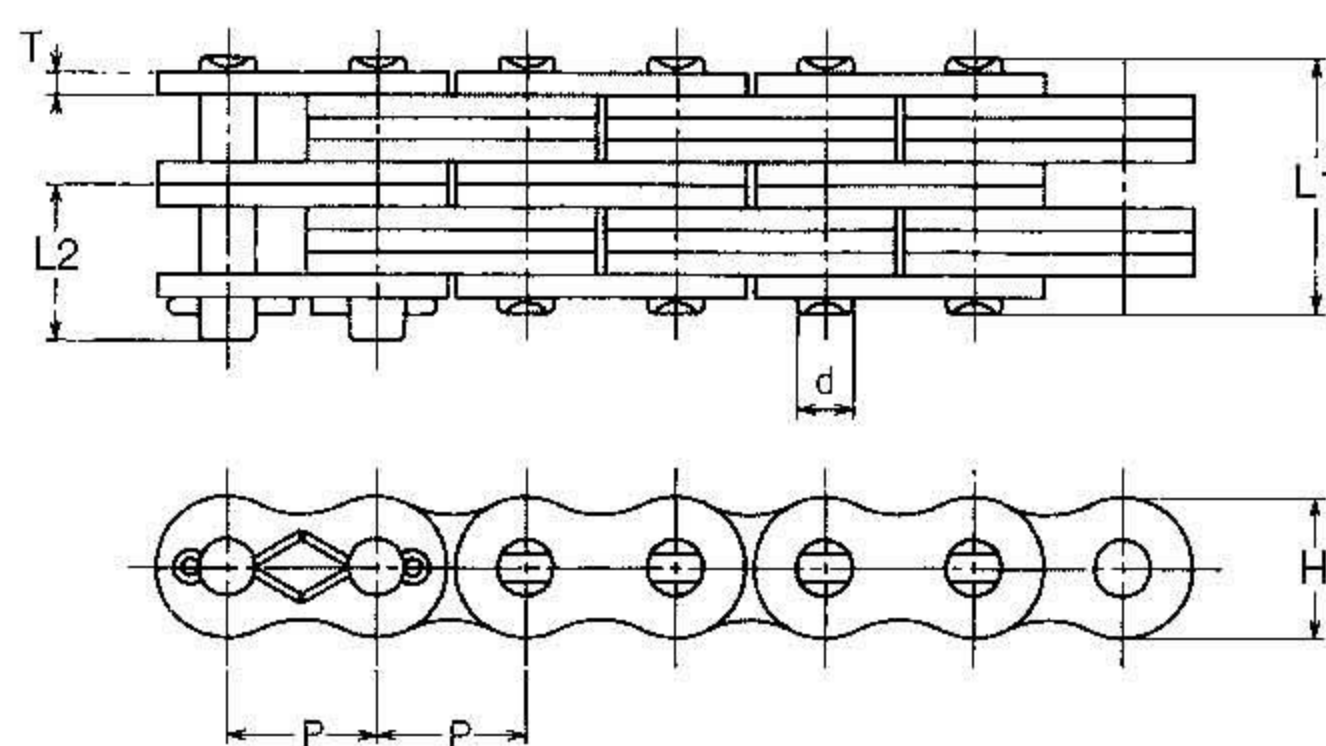
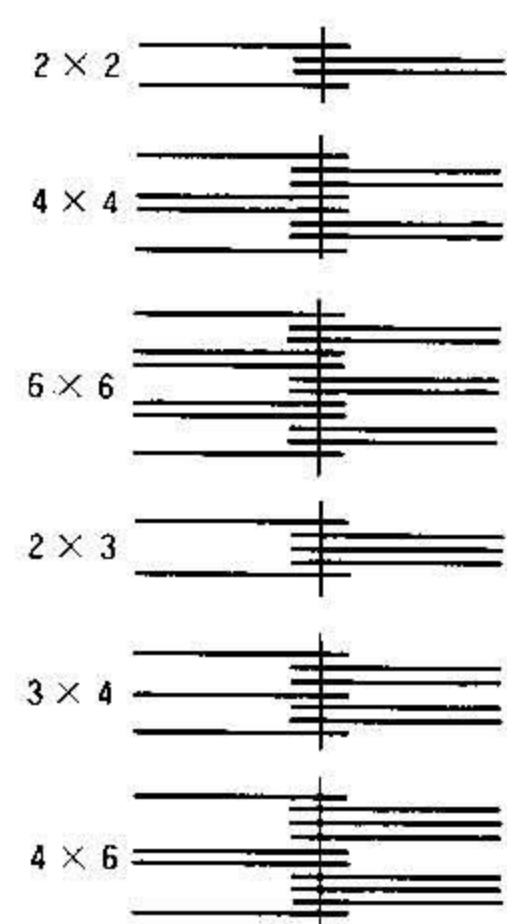


# BL SERIES LEAF CHAIN



UNIT:mm

| OCM Chain No. | Pitch P | Lacing | Link Plate |     | Pin Diam. d | Pin  |      | Minimum Strength Tensile |       | Approx Weight kg/m | Hole Diam. (min) |      |
|---------------|---------|--------|------------|-----|-------------|------|------|--------------------------|-------|--------------------|------------------|------|
|               |         |        | H          | T   |             | L1   | L2   | kN                       | kgf   |                    |                  |      |
| BL422         | 12.7    | 2X2    | 12         | 2   | 5.08        | 10.4 | 7.5  | 24.51                    | 2500  | 0.63               | 5.13             |      |
| BL423         |         | 2X3    |            |     |             | 12.6 | 8.5  | 24.51                    | 2500  |                    |                  | 1.24 |
| BL434         |         | 3X4    |            |     |             | 16.8 | 10.6 | 36.76                    | 3750  |                    |                  |      |
| BL444         |         | 4X4    |            |     |             | 18.9 | 11.7 | 49.02                    | 5000  |                    |                  |      |
| BL446         |         | 4X6    |            |     |             | 23.2 | 13.8 | 49.02                    | 5000  |                    |                  |      |
| BL466         |         | 6X6    |            |     |             | 27.4 | 15.9 | 73.53                    | 7500  |                    |                  |      |
| BL522         | 15.875  | 2X2    | 15         | 2.4 | 5.95        | 12.2 | 8.7  | 38.78                    | 3950  | 0.95               | 6                |      |
| BL523         |         | 2X3    |            |     |             | 14.7 | 10   | 38.78                    | 3950  |                    |                  | 2.31 |
| BL534         |         | 3X4    |            |     |             | 20.3 | 12.5 | 59.8                     | 6100  |                    |                  |      |
| BL544         |         | 4X4    |            |     |             | 22.1 | 13.7 | 77.45                    | 7900  |                    |                  |      |
| BL546         |         | 4X6    |            |     |             | 27.2 | 16.2 | 77.45                    | 7900  |                    |                  |      |
| BL566         |         | 6X6    |            |     |             | 32   | 18.6 | 116.18                   | 11850 |                    |                  |      |
| BL622         | 19.05   | 2X2    | 18         | 3.2 | 7.94        | 16.4 | 11.8 | 63.73                    | 6500  | 1.53               | 8.01             |      |
| BL623         |         | 2X3    |            |     |             | 19.7 | 13.4 | 63.73                    | 6500  |                    |                  | 4.45 |
| BL634         |         | 3X4    |            |     |             | 26.3 | 16.8 | 95.59                    | 9750  |                    |                  |      |
| BL644         |         | 4X4    |            |     |             | 29.8 | 18.5 | 127.45                   | 13000 |                    |                  |      |
| BL646         |         | 4X6    |            |     |             | 36.2 | 21.8 | 127.45                   | 13000 |                    |                  |      |
| BL666         |         | 6X6    |            |     |             | 43.2 | 25.2 | 191.18                   | 19500 |                    |                  |      |
| BL822         | 25.4    | 2X2    | 24         | 4   | 9.53        | 20.1 | 13.9 | 95.1                     | 9700  | 2.6                | 9.6              |      |
| BL823         |         | 2X3    |            |     |             | 24.3 | 16   | 95.1                     | 9700  |                    |                  | 7.66 |
| BL834         |         | 3X4    |            |     |             | 32.5 | 20.1 | 156.86                   | 16000 |                    |                  |      |
| BL844         |         | 4X4    |            |     |             | 36.7 | 22.2 | 200                      | 20400 |                    |                  |      |
| BL846         |         | 4X6    |            |     |             | 45   | 26.4 | 200                      | 20400 |                    |                  |      |
| BL866         |         | 6X6    |            |     |             | 53.2 | 30.5 | 285.29                   | 29100 |                    |                  |      |
| BL1022        | 31.75   | 2X2    | 30         | 4.8 | 11.11       | 24   | 15.7 | 137.25                   | 14000 | 3.89               | 11.19            |      |
| BL1023        |         | 2X3    |            |     |             | 28.9 | 18.1 | 137.25                   | 14000 |                    |                  | 11.5 |
| BL1034        |         | 3X4    |            |     |             | 38.8 | 23.1 | 235.29                   | 24000 |                    |                  |      |
| BL1044        |         | 4X4    |            |     |             | 43.8 | 25.6 | 274.51                   | 28000 |                    |                  |      |
| BL1046        |         | 4X6    |            |     |             | 53.6 | 30.5 | 274.51                   | 28000 |                    |                  |      |
| BL1066        |         | 6X6    |            |     |             | 63.6 | 35.5 | 411.76                   | 42000 |                    |                  |      |
| BL1222        | 38.1    | 2X2    | 36         | 5.6 | 12.7        | 27.8 | 19.2 | 176.47                   | 18000 | 5.44               | 12.78            |      |
| BL1223        |         | 2X3    |            |     |             | 33.8 | 22.1 | 176.47                   | 18000 |                    |                  | 16.1 |
| BL1234        |         | 3X4    |            |     |             | 45.3 | 27.9 | 284.31                   | 29000 |                    |                  |      |
| BL1244        |         | 4X4    |            |     |             | 51.1 | 30.8 | 352.94                   | 36000 |                    |                  |      |
| BL1246        |         | 4X6    |            |     |             | 62.6 | 36.6 | 352.94                   | 36000 |                    |                  |      |
| BL1266        |         | 6X6    |            |     |             | 74.3 | 42.5 | 529.41                   | 54000 |                    |                  |      |
| BL1422        | 44.45   | 2X2    | 42         | 6.4 | 14.29       | 31.8 | -    | 215.69                   | 22000 | 7.22               | 14.36            |      |
| BL1423        |         | 2X3    |            |     |             | 38.4 | -    | 215.69                   | 22000 |                    |                  | 21.3 |
| BL1434        |         | 3X4    |            |     |             | 51.6 | -    | 343.14                   | 35000 |                    |                  |      |
| BL1444        |         | 4X4    |            |     |             | 58.2 | -    | 431.37                   | 44000 |                    |                  |      |
| BL1446        |         | 4X6    |            |     |             | 71.4 | -    | 431.37                   | 44000 |                    |                  |      |
| BL1466        |         | 6X6    |            |     |             | 84.6 | -    | 647.06                   | 66000 |                    |                  |      |
| BL1622        | 50.8    | 2X2    | 48.2       | 7.2 | 17.45       | 35.8 | -    | 323.53                   | 33000 | 9.25               | 17.55            |      |
| BL1623        |         | 2X3    |            |     |             | 43.8 | -    | 323.53                   | 33000 |                    |                  | 27.3 |
| BL1634        |         | 3X4    |            |     |             | 58.6 | -    | 517.65                   | 52800 |                    |                  |      |
| BL1644        |         | 4X4    |            |     |             | 66.1 | -    | 647.06                   | 66000 |                    |                  |      |
| BL1646        |         | 4X6    |            |     |             | 80.7 | -    | 647.06                   | 66000 |                    |                  |      |
| BL1666        |         | 6X6    |            |     |             | 96.4 | -    | 970.59                   | 99000 |                    |                  |      |