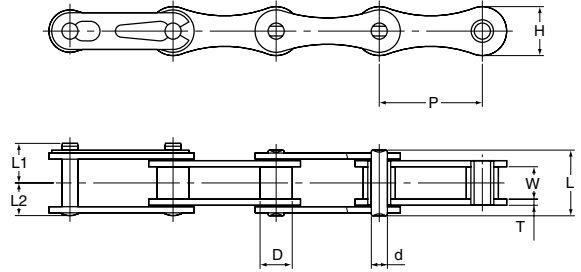


DOUBLE PITCH ROLLER CHAIN

This chain is more economical than standard roller chain and well suited for applications where shaft centers are long. Stainless steel chain is available.



UNIT Upper:inch
Beneath:mm

OCM Chain No.	ANSI No.	Pitch P	Roller Diam. D	Width between L.P. W	Link Plate		Pin Diam. d	Pin			Average Tensile Strength Lb/kg	Approx Weight Lb/ft kg/m
					H	T		L	L1	L2		
OCM2040	2040	1.000	0.312	0.312	0.472	0.060	0.156	0.634	0.382	0.319	3,784	0.27
		25.40	7.94	7.95	12.0	1.5	3.96	16.1	9.7	8.1	1,950	0.41
OCM2050	2050	1.250	0.400	0.376	0.591	0.080	0.200	0.799	0.476	0.409	6,380	0.45
		31.75	10.16	9.55	15.0	2.0	5.08	20.3	12.1	10.4	3,200	0.67
OCM2060	2060	1.500	0.469	0.500	0.677	0.094	0.234	1.000	0.579	0.500	8,910	0.63
		38.10	11.91	12.70	17.2	2.4	5.95	25.4	14.7	12.7	4,450	0.94
OCM2080	2080	2.000	0.625	0.626	0.945	0.125	0.312	1.287	0.760	0.647	16,060	1.139
		50.80	15.88	15.90	24.0	3.2	7.94	32.7	19.3	16.3	7,500	1.70

1. Spring clip type is standard for connecting links of 2040 through 2060 and cotter for 2080 and above.
Note: Dimensions subject to change. Certified dimensions furnished upon request.